

The Big Dipper Mobile Plunge Sheep Dips



9 metre swim to comply with chemical and industry requirements.



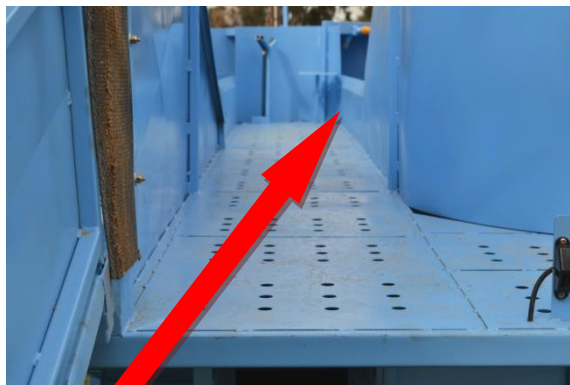
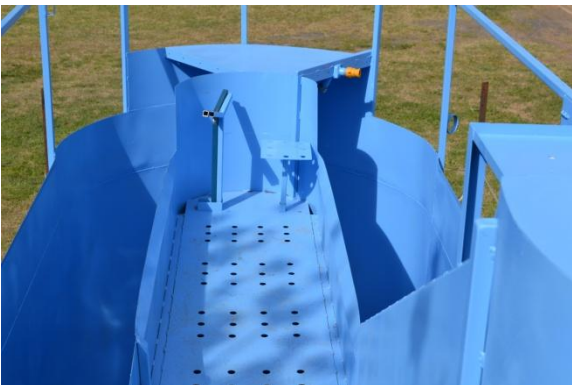
The Big Dipper Mobile Plunge Sheep Dips – PO Box 34, Cudal, NSW, 2864. Phone: 02 6364 5480
Email: thebigdipper@bigpond.com Website: www.thebigdipper.com.au



Overhead sprayer – chemical and water is pumped through overhead sprayers to keep the dip at maximum levels. Sheep are sprayed from above whilst swimming through the dip. This feature maximises the saturation of the sheep.



Enclosed entry hood – Enclosed entry hood stops sheep jumping over on to platform. This feature provides additional safety for operators.



Working platform – Big Dipper dips have a 270mm splashback with 45 degree bend on top to minimise splash on operator and chemical wastage.



Pressed profile – this specially pressed profile gives sheep better footing when exiting the dip.



Enclosed walk down ramp – the exit ramp has enclosed sides which allows the sheep to flow better when exiting the dip. Sheep are not distracted by operator working, dogs or outside movements.



Hand rail on operators walk up ramp – a hand rail on the walk up ramp provides additional safety for operator



Hydraulic brakes – Big Dipper Dips weigh 1200kg and are fitted with hydraulic braking system.

Made of steel. Single axel. Hardwired lighting with LED lights. 8 ply 14 inch tyres. Dip holds 3500 litres. All units are painted with 2 pack industrial paint.

The Big Dipper Mobile Plunge Sheep Dips – PO Box 34, Cudal, NSW, 2864. Phone: 02 6364 5480
Email: thebigdipper@bigpond.com Website: www.thebigdipper.com.au